

A Double-Blind, Randomized, Placebo-Controlled, Dose-Frequency Study of Intravenous Ketamine in Patients With Treatment-Resistant Depression

Jaskaran B. Singh, M.D., Maggie Fedgchin, Pharm.D., Ella J. Daly, M.D., Peter De Boer, Ph.D., Kimberly Cooper, M.S., Pilar Lim, Ph.D., Christine Pinter, M.S., James W. Murrough, M.D., Gerard Sanacora, M.D., Richard C. Shelton, M.D., Benji Kurian, M.D., Andrew Winokur, M.D., Maurizio Fava, M.D., Husseini Manji, M.D., Wayne C. Drevets, M.D., Luc Van Nueten, M.D.

Objective: Ketamine, an *N*-methyl-*D*-aspartate glutamate receptor antagonist, has demonstrated a rapid-onset antidepressant effect in patients with treatment-resistant depression. This study evaluated the efficacy of twice- and thrice-weekly intravenous administration of ketamine in sustaining initial antidepressant effects in patients with treatment-resistant depression.

Method: In a multicenter, double-blind study, adults (ages 18–64 years) with treatment-resistant depression were randomized to receive either intravenous ketamine (0.5 mg/kg of body weight) or intravenous placebo, administered over 40 minutes, either two or three times weekly, for up to 4 weeks. Patients who discontinued double-blind treatment after at least 2 weeks for lack of efficacy could enter an optional 2-week open-label phase to receive ketamine with the same frequency as in the double-blind phase. The primary outcome measure was change from baseline to day 15 in total score on the Montgomery-Åsberg Depression Rating Scale (MADRS).

Results: In total, 67 (45 women) of 68 randomized patients received treatment. In the twice-weekly dosing groups, the mean change in MADRS score at day 15 was -18.4 (SD=12.0) for ketamine and -5.7 (SD=10.2) for placebo; in the thrice-weekly groups, it was -17.7 (SD=7.3) for ketamine and -3.1 (SD=5.7) for placebo. Similar observations were noted for ketamine during the open-label phase (twice-weekly, -12.2 [SD=12.8] on day 4; thrice-weekly, -14.0 [SD=12.5] on day 5). Both regimens were generally well tolerated. Headache, anxiety, dissociation, nausea, and dizziness were the most common ($\geq 20\%$) treatment-emergent adverse events. Dissociative symptoms occurred transiently and attenuated with repeated dosing.

Conclusions: Twice-weekly and thrice-weekly administration of ketamine at 0.5 mg/kg similarly maintained antidepressant efficacy over 15 days.

AJP in Advance (doi: 10.1176/appi.ajp.2016.16010037)

Major depressive disorder is a highly prevalent illness and is often associated with significant morbidity and mortality. While a number of therapies are available for treatment of major depression, a major limitation of all existing antidepressants is delayed onset of action (1). In addition, despite recent advances in the pharmacological and non-pharmacological treatment of major depression, up to 35% of patients fail to respond to drug therapy (2). Depression that does not respond to two or more different antidepressant drugs at adequate dosage and duration, which has been termed treatment-resistant depression, has a significantly lower likelihood of responding to another antidepressant (3).

Ketamine is a noncompetitive, *N*-methyl-*D*-aspartate glutamate receptor antagonist that has been approved for use as an anesthetic (4). Recent studies with ketamine have demonstrated a rapid onset (2–24 hours postinfusion) of

antidepressant effect (5–8). The effect is relatively short-lived, however, and how to sustain ketamine's efficacy for a longer duration through an optimal long-term dosing regimen has not yet been determined. At the time this study started, most previous studies that had assessed the efficacy of ketamine in patients with treatment-resistant depression were randomized controlled trials using a single dose; the duration of response in these studies ranged from 3 to 17 days after dosing (5, 9). More recently, Murrough et al. (7) assessed the sustained antidepressant effect in an open-label period using a thrice-weekly regimen over a 2-week period and found that response was maintained in most patients (median time to loss of response, 18 days; 24th and 75th percentiles, 11 and 27 days). In another study, patients receiving six infusions over a 12-day period demonstrated a gradual increase in response rate (25% after the first dose, 58.3% after three

doses, 91.6% after six doses), with time to loss of response ranging from <7 to >28 days (10). The lowest dosing frequency that could sustain the antidepressant response is not known. A once-weekly dosing interval is unlikely to sustain the response, at least initially, because the average duration of response after a single-dose infusion is less than 1 week (9).

The primary objective of this study was to evaluate the efficacy of two dosing regimens—twice a week and three times a week—of intravenous ketamine (at 0.5 mg/kg of body weight) compared with placebo in sustaining initial antidepressant efficacy in patients with treatment-resistant depression. Secondary objectives were to assess the onset of antidepressant response and the safety of repeated doses of ketamine in this population.

METHOD

Patients

The study enrolled men and women 18 to 64 years of age who met DSM-IV-TR criteria for recurrent major depressive disorder without psychotic features, confirmed by the Mini International Neuropsychiatric Interview (11). Additional inclusion criteria were qualifying valid depressive episodes, as assessed with the SAFER criteria (12) (defined as state versus trait, assessability, face validity, ecological validity, and rule of three Ps—pervasive, persistent, and pathological); inadequate response to at least two antidepressants (with at least one antidepressant failure in the current episode), assessed by medication history and the Massachusetts General Hospital Antidepressant Treatment Response Questionnaire (13); and a score ≥ 34 on the 30-item Inventory of Depressive Symptomatology—Clinician Rated (14,15) at screening and pre-infusion assessment on day 1. Independent SAFER raters from Massachusetts General Hospital verified that all randomized patients met the SAFER criteria, had treatment-resistant depression documented on the Antidepressant Treatment Response Questionnaire, and manifested the required depression severity.

Key exclusion criteria were a primary DSM-IV diagnosis of obsessive-compulsive disorder, posttraumatic stress disorder, anorexia nervosa, or bulimia nervosa or a prior history or current diagnosis of a psychotic disorder, bipolar disorder, mental retardation, borderline personality disorder, mood disorder with postpartum onset, or somatoform disorders. Other exclusion criteria were a history of previous non-response of depressive symptoms to ketamine, clinically significant suicidal or homicidal ideation (imminent risk of harm), and substance abuse or dependence within the year preceding the screening visit.

Independent ethics committees or institutional review boards at each site approved the protocol. The study was conducted in accordance with ethical principles based on the Declaration of Helsinki and consistent with Good Clinical Practices and applicable regulatory requirements. All patients confirmed understanding of the study procedures and provided written informed consent to participate in the study.

Study Design

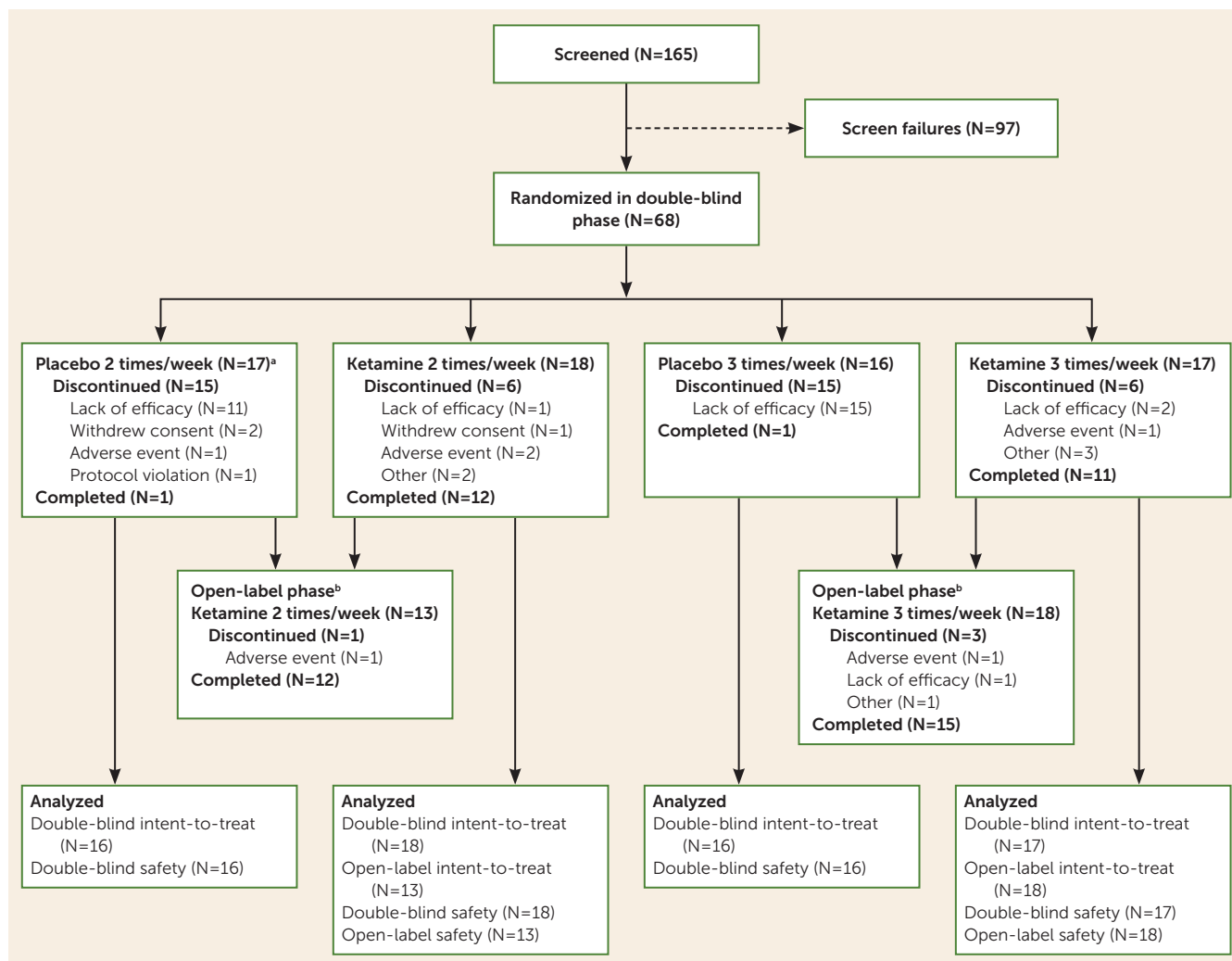
This was a randomized, double-blind, placebo-controlled, parallel-group, phase 2 study conducted at 14 sites in the United States between July 2012 and September 2013. The study consisted of four phases: an up-to-4-week screening phase, a 4-week double-blind treatment phase (day 1 to day 29), an optional 2-week open-label treatment phase, and an up-to-3-week ketamine-free follow-up phase. The maximum study duration for each patient was 13 weeks. During the double-blind treatment phase, patients were randomized in a 1:1:1:1 ratio to one of the four treatment groups: intravenous ketamine (0.5 mg/kg) two or three times weekly or intravenous placebo (0.9% sodium chloride for injection) two or three times weekly, administered over 40 minutes. Study drugs were administered on days 1, 4, 8, 11, 15, 18, 22, and 25 for the twice-weekly regimen and on days 1, 3, 5, 8, 10, 12, 15, 17, 19, 22, 24, and 26 for the thrice-weekly regimen. Randomization was based on a computer-generated randomization scheme, balanced by the use of randomly permuted blocks and stratified by study center. The investigators, patients, and all study staff were kept blind to assigned treatment at randomization. An unblinded pharmacist was accountable for study drug preparation to ensure the integrity of blinding.

Patients fasted overnight (≥ 8 hours) before study drug administration, until 2 hours after the start of infusion. Based on the investigators' clinical judgment, participants, who were generally outpatients throughout the study, could be admitted on the day before dosing. Patients were discharged after completion of the pharmacokinetic blood sampling (i.e., 6 hours after dosing on days 1 and 15) or at least 4 hours after start of the infusion on other dosing days. Patients who had completed the study at least through the day 15 visit in the double-blind treatment phase but had discontinued the study before the day 29 visit because of lack of efficacy were allowed to participate in an optional open-label treatment phase to receive intravenous ketamine (0.5 mg/kg) at the same dosing frequency for an additional 2 weeks. Patients continued any antidepressant medications they were receiving at screening, at the same stable dosages throughout the study. For patients who entered the optional open-label phase, a follow-up visit occurred 1 week after the last dose; for patients who received at least one dose during the double-blind phase but did not enroll in the optional open-label phase, follow-up visits occurred 1, 2, and 3 weeks after the last dose.

Study Evaluations

Efficacy assessments. The primary endpoint was the change from baseline to day 15 (at pre-infusion assessment) in score on the Montgomery-Åsberg Depression Rating Scale (MADRS) (16) in the double-blind phase. A 7-day recall period was used for the measurement of MADRS at baseline, whereas a 24-hour recall period was used for measurements at other time points. The secondary efficacy endpoints included early onset of clinical response (number of patients with an improvement $\geq 50\%$ from baseline in MADRS score during week 1 that was maintained through day 15), total

FIGURE 1. Participant Flow in a Study of Intravenous Ketamine in Treatment-Resistant Depression



^a One patient in the twice-weekly placebo group was not dosed because of poor venous access.

^b The open-label phase included all patients who discontinued the double-blind phase because of lack of efficacy and two other patients who were ineligible to receive the open-label treatment but participated in the open-label phase (one partial responder and one who received open-label ketamine without completing 2 weeks of the double-blind phase [considered a protocol deviation]).

number of responders at each time point up to day 15 (number of patients with a $\geq 50\%$ reduction from baseline in MADRS score), and total number of remitters at day 15 (number of patients with a MADRS score ≤ 10) in each ketamine group compared with the respective placebo group. Other secondary efficacy endpoints included the change in MADRS score from baseline through day 29, change at each time point and at endpoint in the Clinical Global Impressions severity score (CGI-S) (17, 18), CGI improvement score (CGI-I) (17, 18), change in the Patient Global Impression severity score (PGI-S) (19), and Patient Global Impression of Change score (PGI-C) (18). During the open-label phase, in the twice-weekly group, the MADRS, CGI-S, and CGI-I were administered on day 4 and the PGI-S and PGI-C on days 4, 8, and 11; in the thrice-weekly group, the MADRS, CGI-S, and CGI-I were administered on days 3 and 5 and the PGI-S and PGI-C on days 3, 5, 8, 10, and 12.

Safety assessments. Safety was assessed by treatment-emergent adverse events, laboratory tests, vital signs (including pulse oximetry monitoring), physical examinations, ECG monitoring, Brief Psychiatric Rating Scale positive symptom subscale (BPRS+) (20), and the Clinician-Administered Dissociative States Scale (CADSS) (21).

Pharmacokinetic assessments. Venous blood samples were collected at prespecified time points (before dosing and up to 6 hours after dosing on day 1 and on day 15) to measure plasma concentrations of ketamine and norketamine (the active metabolite of ketamine) (using a liquid chromatography-tandem mass spectrometry method with a quantification range of 0.5–500 ng/mL).

The following noncompartmental pharmacokinetic parameters were estimated for both ketamine and norketamine: observed maximum plasma concentration (C_{max}); time to

TABLE 1. Baseline Demographic and Clinical Characteristics in a Study of Intravenous Ketamine in Treatment-Resistant Depression (Intent-to-Treat Population)^a

Characteristic	Twice-Weekly Dosing				Thrice-Weekly Dosing				Overall Sample (N=67)	
	Placebo (N=16)		Ketamine (N=18)		Placebo (N=16)		Ketamine (N=17)		Mean	SD
	Mean	SD	Mean	SD	Mean	SD	Mean	SD	Mean	SD
Age (years)	40.3	11.8	45.7	9.6	46.1	10.5	43.3	12.0	43.9	11.0
Weight (kg)	80.5	19.7	80.6	18.6	87.0	23.7	75.9	18.6	80.9	20.1
Body mass index	27.7	6.4	29.3	6.5	28.8	5.8	26.6	6.2	28.1	6.2
Baseline MADRS score	35.6	3.8	33.3	4.9	36.8	5.8	35.4	5.3	35.2	5.1
	N	%	N	%	N	%	N	%	N	%
Female	12	75.0	12	66.7	9	56.3	12	70.6	45	67.2
Race										
White	15	93.8	12	66.7	15	93.8	11	64.7	53	79.1
Black or African American	1	6.3	6	33.3	1	6.3	4	23.5	12	17.9
Other	0	0.0	0	0.0	0	0.0	2	11.8	2	3.0
Not Hispanic or Latino	15	93.8	17	94.4	15	93.8	14	82.4	61	91.0
Anxious depression ^b	4	25.0	6	33.3	2	12.5	7	41.2	19	28.4
Baseline CGI-S ratings										
Moderately ill	3	18.8	7	38.9	4	25.0	7	41.2	21	31.3
Markedly ill	11	68.8	10	55.6	11	68.8	8	47.1	40	59.7
Severely ill	2	12.5	1	5.6	1	6.3	2	11.8	6	9.0
Number of antidepressants in current episode										
1	6	37.5	9	50.0	10	62.5	11	64.7	36	53.7
2	9	56.3	6	33.3	2	12.5	4	23.5	21	31.3
3	1	6.3	1	5.6	2	12.5	1	5.9	5	7.5
4	0	0.0	2	11.1	0	0.0	0	0.0	2	3.0
≥5	0	0.0	0	0.0	2	12.5	1	5.9	3	4.5

^a CGI-S=Clinical Global Impressions severity score; MADRS=Montgomery-Åsberg Depression Rating Scale.

^b Presence of anxious depression was defined as having a score ≥7 for items 7, 25, 26, 27, 28 of the 30-item Inventory of Depressive Symptomatology–Clinician Rated.

reach $C_{max}(t_{max})$; area under the plasma concentration-time curve from time 0 to 6 hours postinfusion (AUC_{6h}).

Statistical Analysis

All efficacy analyses were performed on the intent-to-treat set, which included all randomized patients who received at least one dose of the study drug during the double-blind phase and for whom data were available for both the baseline assessment and at least one postbaseline assessment. Patients who entered the open-label treatment phase were included in the open-label intent-to-treat analysis set. The safety analysis set included all randomized patients who received at least one dose of the study drug.

Assuming a treatment difference of ≥8 points in the mean change from baseline to endpoint in MADRS score between the ketamine and placebo groups, 14 patients were required in each group in order to detect this treatment difference with a power of 90% at an overall one-sided p value of 0.15 (common in phase 2 studies) based on a two-sample t test. Thus, a total of 56 patients were to be recruited across the four treatment groups.

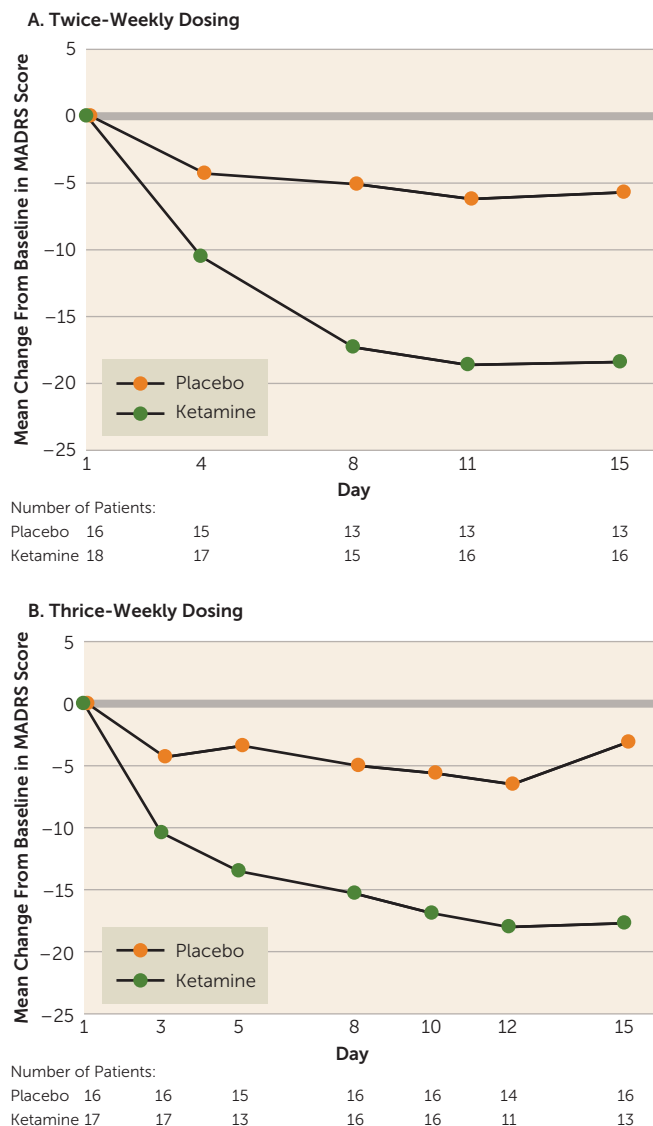
For MADRS score, imputation of any missing individual item scores was applied. For all other scales, if any item of the scale was missing on one visit, the total score for that scale at

that visit was left blank. The primary efficacy endpoint and the change from baseline in MADRS score to day 29 were analyzed using a mixed-effect model with repeated measures, with baseline MADRS score as a covariate, center and time-by-treatment interaction as fixed effects, and patient as a random effect. The threshold for detecting a therapeutic signal was based on least-squares means using a one-sided alpha of 0.15. For each time point, descriptive statistics were provided for MADRS score and changes from baseline. All statistical analyses were performed using SAS, version 9.2 (SAS Institute, Cary, N.C.).

The proportion of patients who had an onset of clinical response within the first week in each ketamine group was compared with the corresponding placebo group using the exact Mantel-Haenszel test. The analysis of the change in CGI-S and PGI-S scores was performed using a rank-based analysis of covariance model, whereas the analysis of CGI-I and PGI-C scores was performed using a rank-based analysis of variance model.

The plasma concentrations of ketamine and norketamine and their corresponding noncompartmental pharmacokinetic parameters were summarized using descriptive statistics. Statistical analyses were performed to compare the C_{max} and AUC_{6h} values on day 15 with those on day 1.

FIGURE 2. Change in Montgomery-Åsberg Depression Rating Scale (MADRS) Score, by Dose Frequency, From Baseline Through Day 15 of the Double-Blind Phase in a Study of Intravenous Ketamine in Treatment-Resistant Depression



RESULTS

Patients

A total of 165 patients were screened for eligibility, and 68 were randomized into the four arms of the double-blind phase (Figure 1). A total of 57 (83.8%) patients completed the first 15 days of the double-blind phase, and 25 (36.8%) patients completed the 4-week double-blind phase as planned. After day 15, patients who had not responded had the option of moving to the optional 2-week open-label phase. The majority of patients who discontinued before day 29 withdrew because of lack of efficacy, and most of them were receiving placebo (total dropouts, N=29; twice-weekly groups: ketamine, N=1; placebo, N=11; thrice-weekly groups: ketamine, N=2; placebo, N=15). In both of the frequency groups, more patients treated with ketamine than with

placebo continued up to week 3 and week 4 in the double-blind phase (week 3: twice-weekly ketamine, N=14; placebo, N=4; thrice-weekly ketamine, N=15; placebo, N=1; and week 4: twice-weekly ketamine, N=13; placebo, N=2; thrice-weekly ketamine, N=13; placebo, N=1). Of the 31 patients enrolled in the optional open-label phase, 27 (87%) completed it.

Overall, baseline demographic and clinical characteristics did not differ significantly across the treatment groups (Table 1). In the entire sample, the mean age was 43.9 years (SD=11.0), and 67.2% (N=45) of the patients were women. The mean MADRS score at baseline was 35.2 (SD=5.1). The antidepressants most commonly used (>10% of patients in each treatment group) at baseline were fluoxetine, citalopram, and bupropion; these agents were continued throughout the study.

Primary Outcomes

The mean change in MADRS score from baseline to day 15 was significantly improved in both ketamine frequency groups compared with the respective placebo groups (twice-weekly ketamine: -18.4 [SD=12.0]; placebo: -5.7 [SD=10.2]; $p<0.001$; thrice-weekly ketamine: -17.7 [SD=7.3]; placebo: -3.1 [SD=5.7]; $p<0.001$). The difference of least-squares mean change from baseline was -16.0 (SE=3.7) in the twice-weekly ketamine group and -16.4 (SE=2.4) in the thrice-weekly ketamine group compared with the respective placebo groups, and the difference was progressive through the first 8–11 days (Figure 2). Overall, the mean difference in MADRS scores did not differ between the two frequencies tested.

Secondary Outcomes

The mean change in MADRS score (last observation in the double-blind phase carried forward) improved from baseline to day 29 for both ketamine groups (twice-weekly ketamine, -21.2 [SD=12.9]; placebo, -4.0 [SD=9.1]; thrice-weekly ketamine, -21.1 [SD=11.2]; placebo, -3.6 [SD=6.6]).

Onset of a clinical response within week 1 that was maintained through day 15 was observed in a higher proportion of patients in both ketamine groups compared with the respective placebo groups (Table 2). Additionally, the proportion of responders and remitters was higher in both ketamine groups compared with the respective placebo groups. The CGI-S and PGI-S scores decreased significantly ($p<0.05$, one-tailed) in both ketamine groups compared with the respective placebo groups. The CGI-I and PGI-C scores showed significant improvement ($p\leq 0.01$) in both ketamine groups compared with respective placebo groups.

During the open-label ketamine phase, both groups showed improvement in mean MADRS score compared with baseline, and the change in both frequency groups was similar (twice-weekly, -12.2 [SD=12.8] on day 4 of open-label treatment; thrice-weekly, -14.0 [SD=12.5] on day 5 of open-label treatment) (see Table S1 in the data supplement that accompanies the online edition of this article). Similarly, during the ketamine-free follow-up phase, MADRS scores

TABLE 2. Major Secondary Efficacy Endpoints in a Study of Intravenous Ketamine in Treatment-Resistant Depression

Measure ^a	Twice-Weekly Dosing						Thrice-Weekly Dosing							
	Placebo (N=16)			Ketamine (N=18)			p	Placebo (N=16)			Ketamine (N=17)			p
	N	N	%	N	N	%		N	N	%	N	N	%	
MADRS response at day 15 ^b	13			16			0.005	16			13			0.004
Responders		2	15.4		11	68.8			1	6.3		7	53.8	
Nonresponders		11	84.6		5	31.3			15	93.8		6	46.2	
MADRS remission at day 15 ^c	13			16			0.05	16			13			0.08
Remitters		1	7.7		6	37.5			0	0		3	23.1	
Nonremitters		12	92.3		10	62.5			16	100.0		10	76.9	
MADRS onset of clinical response in week 1 maintained through day 15 ^d	16			18			0.11	16			17			0.03
Responders		1	6.3		7	38.9			0	0		4	23.5	
Nonresponders		15	93.8		11	61.1			16	100.0		13	76.5	
	N	Mean	SD	N	Mean	SD		N	Mean	SD	N	Mean	SD	
MADRS change from baseline on day 29 ^e	15	-4.0	9.1	18	-21.2	12.9		16	-3.6	6.6	17	-21.1	11.2	
	N	Median	Range	N	Median	Range	p	N	Median	Range	N	Median	Range	p
CGI-S change from baseline at endpoint ^e	15	0.0	-4, 0	18	-2.0	-4, 1	0.02	16	0.0	-1, 1	17	-2.0	-4, 0	<0.001
CGI-I at endpoint ^e	16	4.0	1, 5	18	2.0	1, 5	0.01	16	4.0	2, 5	17	2.0	1, 5	<0.001
PGI-S change from baseline at endpoint ^e	15	0.0	-3, 2	18	-4.0	-8, 0	<0.001	16	-1.0	-3, 1	17	-3.0	-8, 1	<0.001
PGI-C at endpoint ^e	16	4.0	2, 6	18	2.0	1, 4	0.001	16	4.0	3, 6	17	3.0	1, 4	<0.001

^a CGI-I=Clinical Global Impressions improvement scale; CGI-S=Clinical Global Impressions severity scale; MADRS=Montgomery-Åsberg Depression Rating Scale; PGI-C=Patient Global Impression change scale; PGI-S=Patient Global Impression severity scale.

^b Defined as a reduction of ≥50% in MADRS score from baseline at day 15.

^c Defined as a score ≤10 on the MADRS at day 15.

^d Defined as an improvement ≥50% in MADRS score from baseline within week 1 that was maintained to day 15.

^e Endpoint was the last-observation-carried-forward data at day 29.

were generally comparable between the two ketamine groups (see Table S1). MADRS scores over time for individual patients from double-blind baseline to day 18 of the follow-up phase are presented in Figure S1 in the data supplement.

During the 2-week open-label ketamine phase, the mean CGI-S and PGI-S scores were similar in both groups. The mean CGI-I and PGI-C scores for both ketamine groups were also similar in the open-label phase.

Pharmacokinetic Outcomes

The pharmacokinetic profiles of ketamine and norketamine were similar between treatment regimens (twice compared with thrice weekly) and study days (day 1 compared with day 15) (see Figure S2 and Table S2 in the online data supplement). The C_{max} for ketamine ranged from 168 to 219 ng/mL, and the C_{max} for norketamine ranged from 63.5 to 77.3 ng/mL. The plasma AUCs for ketamine and norketamine were similar across the treatment groups and study days (mean AUC_{6h} of ketamine: range, 293–342 h·ng/mL; norketamine: range, 232–265 h·ng/mL). Individual C_{max} and AUC_{6h} values of ketamine (both dosing regimens) showed no significant correlation with individual body weight (data not shown).

Safety

During the double-blind phase, treatment-emergent adverse events were higher in both ketamine groups compared with the respective placebo groups (twice-weekly ketamine, 83.3%; placebo, 56.3%; thrice-weekly ketamine, 76.5%; placebo, 50.0%) (Table 3). No deaths were reported. Serious treatment-emergent adverse events occurred in two patients in the twice-weekly ketamine group (anxiety [life event related] leading to hospitalization on day 12 in one patient and suicide attempt on day 40 [i.e., more than 4 weeks after last dose] in the other patient). Neither of these adverse events was considered by the study’s responsible physician to be related to ketamine. Discontinuation due to treatment-emergent adverse events occurred in two patients (11.1%) in the twice-weekly ketamine group (anxiety, N=1; anxiety, paranoia, and palpitation, N=1), one patient (6.3%) in the twice-weekly placebo group (intervertebral disc degeneration), and one patient (5.9%) in the thrice-weekly ketamine group (anxiety, dizziness, hypoesthesia, and feeling cold). No treatment discontinuations due to adverse events occurred in the thrice-weekly placebo group. The most common treatment-emergent adverse events (≥20% patients in any treatment groups) were headache, anxiety,

TABLE 3. Treatment-Emergent Adverse Events in a Study of Intravenous Ketamine in Treatment-Resistant Depression (Safety Analysis Set)

Measure	Double-Blind Phase								Open-Label and Follow-Up Phases			
	Placebo Twice Weekly (N=16)		Ketamine Twice Weekly (N=18)		Placebo Thrice Weekly (N=16)		Ketamine Thrice Weekly (N=17)		Ketamine Twice Weekly (N=13)		Ketamine Thrice Weekly (N=18)	
	N	%	N	%	N	%	N	%	N	%	N	%
Patients with ≥1 event	9	56.3	15	83.3	8	50.0	13	76.5	10	76.9	14	77.8
Patients with drug-related events	6	37.5	13	72.2	5	31.3	10	58.8	9	69.2	12	66.7
Most common events (≥20% patients in any treatment group)												
Headache	5	31.3	4	22.2	1	6.3	7	41.2	3	23.1	1	5.6
Anxiety	0	0.0	5	27.8	0	0.0	1	5.9	0	0.0	1	5.6
Dissociation	0	0.0	5	27.8	0	0.0	1	5.9	2	15.4	1	5.6
Nausea	1	6.3	3	16.7	2	12.5	4	23.5	3	23.1	4	22.2
Dizziness	1	6.3	4	22.2	0	0.0	2	11.8	2	15.4	1	5.6
Serious events	0	0.0	2	11.1	0	0.0	0	0.0	0	0.0	0	0.0
Anxiety	0	0.0	1	5.6	0	0.0	0	0.0	0	0.0	0	0.0
Suicide attempt ^a	0	0.0	1	5.6	0	0.0	0	0.0	0	0.0	0	0.0
Event leading to discontinuation of study drug ^b	1	6.3	2	11.1	0	0.0	1	5.9	1	7.7	1	5.6
Anxiety	0	0.0	2	11.1	0	0.0	1	5.9	0	0.0	0	0.0
Dizziness	0	0.0	0	0.0	0	0.0	1	5.9	0	0.0	0	0.0
Paranoia	0	0.0	1	5.6	0	0.0	0	0.0	0	0.0	0	0.0
Palpitation	0	0.0	1	5.6	0	0.0	0	0.0	0	0.0	0	0.0
Feeling cold	0	0.0	0	0.0	0	0.0	1	5.9	0	0.0	0	0.0
Intervertebral disc degeneration	1	6.3	0	0.0	0	0.0	0	0.0	0	0.0	0	0.0
Hypoesthesia	0	0.0	0	0.0	0	0.0	1	5.9	0	0.0	0	0.0
Nausea	0	0.0	0	0.0	0	0.0	0	0.0	1	7.7	0	0.0
Irritability	0	0.0	0	0.0	0	0.0	0	0.0	0	0.0	1	5.6

^a On day 40 (i.e., more than 4 weeks after last dose).

^b Not mutually exclusive.

dissociation, nausea, and dizziness (Table 3). These adverse events typically occurred on the days of dosing and in general dissipated within 2 hours from start of dosing.

During the ketamine open-label and ketamine-free follow-up phases, the proportion of treatment-emergent adverse events was similar in both groups; no serious adverse events were reported. Treatment-emergent adverse events leading to treatment discontinuation occurred in two patients (nausea in one [twice-weekly ketamine group] and irritability in the other [thrice-weekly ketamine group]). The onset of most of the adverse events occurred on dosing days in all four groups (data not shown). Mean changes in pulse rate and blood pressure were within normal limits for all patients in the four treatment groups. No clinically significant changes in laboratory tests, pulse oximetry, and ECG were observed during the study.

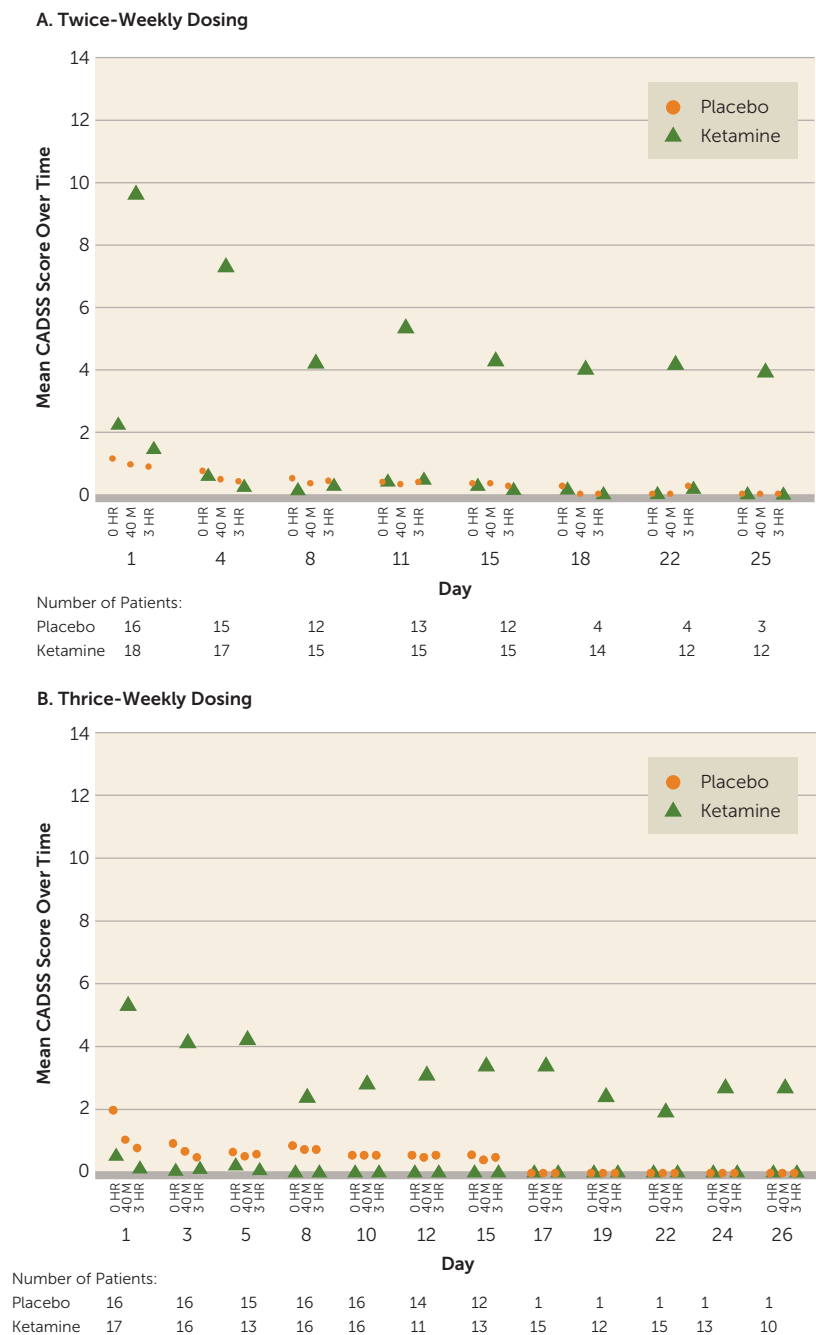
During the double-blind and open-label phases, dissociative symptoms (measured by change in CADSS total score) were observed shortly (40 minutes) after start of the infusion and resolved by 3 hours postinfusion (Figure 3). The intensity of dissociative symptoms diminished with repeated dosing (CADSS total score at 40 minutes: twice-weekly

group, mean=9.6 [SD=9.31] on day 1 compared with mean=4.3 [SD=6.43] on day 15; thrice-weekly group: mean=5.3 [SD=6.75] on day 1 compared with mean=3.4 [SD=5.27] on day 15). No delusions or hallucinations were observed during the study. Similarly, BPRS+ scores returned to the pre-infusion values at the 3-hour postinfusion assessment in the two ketamine frequency groups in both the double-blind and open-label phases (BPRS+ score at 40 minutes: twice-weekly group, mean=1.2 [SD=2.15] on day 1 compared with mean=0.4 [SD=0.83] on day 15; thrice-weekly group: mean=1.1 [SD=1.61] on day 1 compared with mean=0.8 [SD=1.92] on day 15) (Figure 4). An improvement in suicidal ideation (measured by the Columbia–Suicide Severity Rating Scale) was observed in all four treatment groups (see Table S3 in the data supplement).

DISCUSSION

This study was designed to evaluate the efficacy of two dosing regimens of ketamine at 0.5 mg/kg administered intravenously over 40 minutes in sustaining the antidepressant effects of ketamine in patients with treatment-resistant

FIGURE 3. Score Over Time on the Clinician-Administered Dissociative States Scale (CADSS), by Dose Frequency, in the Double-Blind Phase of a Study of Intravenous Ketamine in Treatment-Resistant Depression^a



^a The scale for the CADSS ranges from 0 to 92.

depression beyond the initial dose. Once-weekly administration was not tested, as previous data have shown an average duration of effect of 5 days after a single dose of ketamine (8). At day 15, MADRS score was significantly improved in patients receiving ketamine compared with those receiving placebo; the two dosing frequencies (twice and thrice weekly) were equally successful in sustaining the antidepressant response throughout the study period. The mean improvement in MADRS score in both ketamine groups was

progressive through the first 8–11 days and was consistent through all time points (Figure 2). Because the effect size of the antidepressant signal did not differ significantly between the two dosing frequencies, a twice-weekly initiation treatment regimen appears to be sufficient as an initial repeated-dose strategy in patients with treatment-resistant depression.

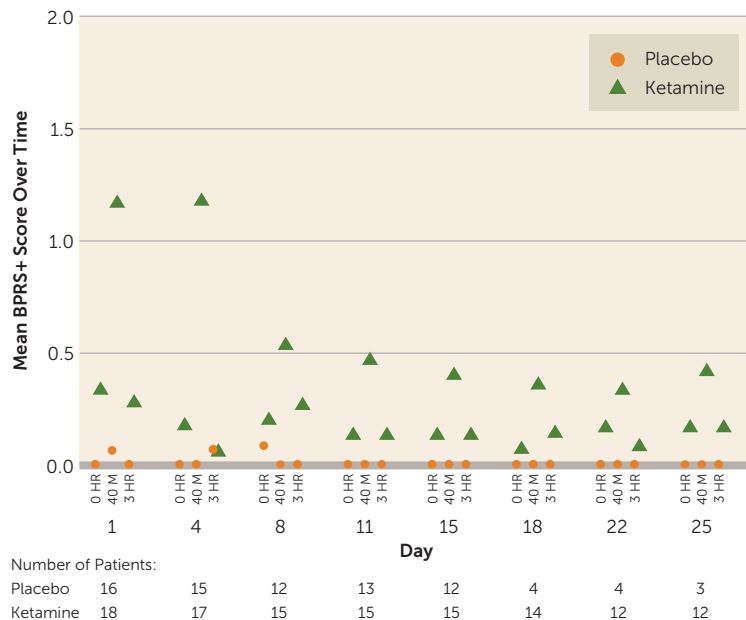
A previous multiple-dose pilot study evaluated six doses (thrice weekly) of intravenous ketamine in patients with treatment-resistant depression for 2 weeks and reported response rates of 62.5% (first dose) to 70.8% (sixth dose) (7). Another study with a similar treatment session regimen reported a gradual increase in response rate from 25% (first dose) to 92% (sixth dose) (10). In the present study, we evaluated repeated intravenous doses with two different dosing regimens and observed response rates of 68.8% for twice-weekly dosing and 53.8% for thrice-weekly dosing at day 15. Thus, although the study designs differ, a progressive increase in response rate beyond the first dose was also observed here.

Overall, analyses of primary and secondary endpoints showed better efficacy for ketamine compared with placebo during the double-blind phase; the results also appeared similar across the study groups. Few patients remained in either placebo group at day 29. Most of the participants receiving placebo were nonresponders and discontinued from the study after day 15 because of lack of efficacy and then received 2 weeks of open-label ketamine treatment, per protocol. However, among the patients who continued placebo across the double-blind period, a subset appeared responsive to placebo. The efficacy results in the open-label and follow-up phases appeared consistent with the double-blind treatment phase. Those who responded or remitted maintained the efficacy for the 4-week follow-up under either twice-weekly or thrice-weekly ketamine regimens.

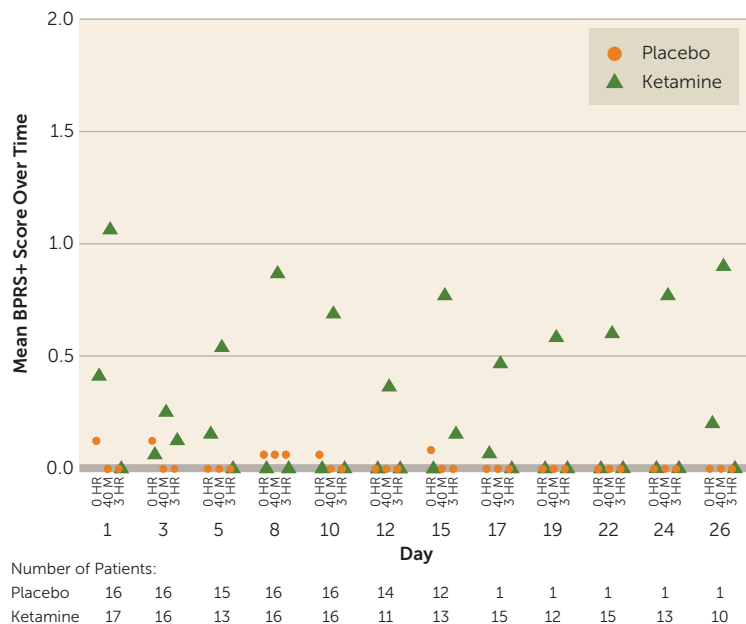
The safety and tolerability of ketamine was consistent with earlier reports in patients with treatment-resistant depression (5, 7–9). Our study was not powered to detect a significant difference in the treatment-emergent adverse event profiles between the two ketamine groups. No deaths occurred. During the double-blind phase, patients receiving twice-weekly ketamine reported two serious treatment-emergent adverse events of anxiety and suicide attempt, with the latter occurring more than

FIGURE 4. Score Over Time on the Positive Symptom Subscale of the Brief Psychiatric Rating Scale (BPRS+), by Dose Frequency, in the Double-Blind Phase of a Study of Intravenous Ketamine in Treatment-Resistant Depression^a

A. Twice-Weekly Dosing



B. Thrice-Weekly Dosing



^a The scale for the BPRS+ ranges from 0 to 24.

4 weeks after the last dose. Overall, the treatment-emergent adverse events appeared similar in frequency in the double-blind and open-label phases (headache, nausea, dizziness, etc.). Acute transient psychotomimetic and dissociative symptoms were also observed, which usually resolved within 2 hours, consistent with earlier reports (8, 9). The intensity of dissociative/perceptual change treatment-emergent adverse events, as assessed using the CADSS, decreased with consecutive doses.

Several limitations of our study merit comment. The study had a relatively short duration and assessed the induction and maintenance of response for only 4–6 weeks. Treatment-resistant depression is a chronic condition, and studies with a longer duration are warranted to fully characterize whether the clinical benefits of ketamine can be maintained, and if so, whether they can be sustained despite reductions in the dosing frequency during chronic treatment. Additionally, no active control was used in the study. This is a limitation of all studies with multiple doses of ketamine, as the adverse events associated with ketamine conceivably may unblind the active drug administration to patients and/or clinicians. Finally, the aim of the study was to assess the efficacy of two dosing regimens that differed only in frequency of administration, although it was not powered to detect a statistically significant difference between the two regimens.

CONCLUSIONS

Ketamine, administered intravenously at 0.5 mg/kg of body weight either two or three times weekly, appeared comparably effective in both achieving rapid onset and maintaining antidepressant efficacy in patients with treatment-resistant depression across the 15-day period of assessment for the primary efficacy endpoint. The improvement was similar in the two frequency groups. As less frequent treatment administration is usually preferred in order to reduce the patient and clinic burden and costs, this result, taken together with other data acquired during the double-blind and open-label phases, suggests that the twice-weekly treatment regimen administered for 4 to 6 weeks can induce and maintain (through day 15) a robust antidepressant effect in the treatment-resistant depression population. Overall, both treatment regimens were generally tolerable, with significant attenuation of the dissociative adverse events across repeated infusions. Studies of the sustained effects over longer periods are needed.

AUTHOR AND ARTICLE INFORMATION

From Janssen Research and Development, Titusville, N.J., and Beerse, Belgium; the Departments of Psychiatry and Neuroscience, Icahn School of Medicine at Mount Sinai, New York, N.Y.; the Department of Psychiatry, Yale University, New Haven, Conn.; the Department of Psychiatry and Behavioral Neurobiology, School of Medicine, University of Alabama

at Birmingham; the Department of Psychiatry, University of Texas Southwestern Medical Center, Dallas; the Institute of Living, Hartford, Conn.; University of Connecticut Health Center, Farmington; the Department of Psychiatry, Massachusetts General Hospital, Boston.

Address correspondence to Dr. Singh (jsingh25@its.jnj.com).

Presented in part at the 69th Annual Scientific Meeting of the Society of Biological Psychiatry, New York, May 8–10, 2014; the 2014 American Society of Clinical Psychopharmacology Annual Meeting, Hollywood, Fla., June 16–19, 2014; the 29th CINP (International Congress of Neuropsychopharmacology) World Congress, Vancouver, June 22–26, 2014; and the 27th Congress of the European College of Neuropsychopharmacology, Berlin, October 18–21, 2014.

This study was funded by Janssen Research and Development, which also provided a formal review of the manuscript.

The authors acknowledge Pravin Bolshete, B.A.M.S., and Shalini Nair, Ph.D. (SIRO Clinpharm Pvt. Ltd.) for writing assistance and Wendy Battisti, Ph.D., and Ellen Baum, Ph.D. (Janssen Research and Development) for additional editorial support in the development of this manuscript. The authors thank all the investigators and co-investigators who took part and contributed to data collection in this study, as well as the study participants, without whom the study would never have been accomplished.

ClinicalTrials.gov identifier: NCT01627782.

Drs. Singh, Fedgchin, Daly, De Boer, Lim, Manji, Drevets, Van Nueten, Ms. Cooper, and Ms. Pinter are employed by Janssen Research and Development and own stocks in the company. Dr. Manji reports a patent, which is assigned to Icahn School of Medicine at Mount Sinai, Yale University, and NIH, but he will not receive any financial benefit from this patent; the Icahn School of Medicine at Mount Sinai has entered into a licensing agreement with Johnson & Johnson and will receive payments related to the use of ketamine for the treatment of depression. Dr. Murrrough has served as a consultant for Genentech, Impel Neuropharma, Janssen Research and Development, and Prophase and has received research funding from Avanir and Janssen Research and Development. Dr. Sanacora has served as a consultant for Allergan, Alkermes, AstraZeneca, Avanir, Bristol-Myers Squibb, Eli Lilly, Hoffman-La Roche, Janssen, Merck, Navigen, Naurex, Noven, Servier, Taisho, Takeda, Teva, and VistaGen Therapeutics; he has received research contracts from AstraZeneca, Bristol-Myers Squibb, Eli Lilly, Janssen, Hoffman-La Roche, Merck, Naurex, and Servier; he received medication from Sanofi-Aventis for an NIH-sponsored study; he holds shares in BioHaven Pharmaceuticals Holding Company; and he is named as a co-inventor on a U.S. patent held by Yale University. Dr. Shelton has served as a consultant for Bristol-Myers Squibb, Cerecor, Cyberonics, Eli Lilly, Forest, Janssen, Medtronic, Methylation Sciences, Naurex, Pamlab, Pfizer, Ridge Diagnostics, Shire Pic, and Takeda, and he has received research funding from Alkermes, Assurex, Avanir, Bristol-Myers Squibb, Eli Lilly, Elan, Euthymics Bioscience, Forest, Janssen, Naurex, Novartis, Otsuka, Pamlab, Pfizer, Repligen, St. Jude Medical, and Takeda. Dr. Kurian has received research funding from Janssen Research and Development, NIMH, and Naurex. Dr. Winokur received consulting fees from Mitsubishi-Tanabe Pharma and research funding from Janssen, Pfizer, Roche, Forest, Shire, and Takeda. Dr. Fava has received research support from and/or served as an adviser or consultant to Acadia, Alkermes, AstraZeneca, Avanir, AXSOME Therapeutics, Biogen, Bristol-Myers Squibb, Cerecor, Dinippon Sumitomo Pharma, Eli Lilly, EnVivo, Euthymics Bioscience, Forest Pharmaceuticals, FORUM Pharmaceuticals, GenOmind, GlaxoSmithKline, Indivior, Intracellular, Janssen Research and Development, Johnson & Johnson Pharmaceutical Research and Development, Lundbeck, Merck, Methylation Sciences, MSI Methylation Sciences, the National Center for Complementary and Alternative Medicine, the National Coordinating Center for Integrative Medicine, NIDA, NIMH, Naurex, Nestle Health Sciences, Neuralstem, NeuroRx, Novartis AG, Nutrition 21, Osmotica, Otsuka Pharmaceuticals, Pamlab, Pfizer, PharmorX Therapeutics, Photothera, PPD, Puretech Ventures, PsychoGenics, RCT Logic (formerly Clinical Trials Solutions), Reckitt Benckiser, Ridge Diagnostics,

Roche Pharmaceuticals, Sanofi-Aventis, Servier Laboratories, the Stanley Medical Research Institute, Sunovion, Taisho, Takeda, Tal Medical, and VistaGen; he has had speaking or publishing roles for the American Society of Clinical Psychopharmacology, Belvoir Media Group, CME Institute/Physicians Postgraduate Press, and MGH Psychiatry Academy; he has equity holdings in Compellis and PsyBrain; he is named on patents for sequential parallel comparison design, licensed by MGH to Pharmaceutical Product Development and a patent application for a combination of ketamine plus scopolamine in major depressive disorder, licensed by MGH to Biohaven; and he is a copyright holder for the MGH Cognitive and Physical Functioning Questionnaire, the Sexual Functioning Inventory, the Antidepressant Treatment Response Questionnaire, Discontinuation-Emergent Signs and Symptoms, the Symptoms of Depression Questionnaire, and SAFER and has publications with Lippincott Williams & Wilkins, Wolters Kluwer, and World Scientific Publishing.

Received Jan. 10, 2016; accepted Jan. 11, 2016.

REFERENCES

- Machado-Vieira R, Salvatore G, Luckenbaugh DA, et al: Rapid onset of antidepressant action: a new paradigm in the research and treatment of major depressive disorder. *J Clin Psychiatry* 2008; 69: 946–958
- Rush AJ, Trivedi MH, Wisniewski SR, et al: Acute and longer-term outcomes in depressed outpatients requiring one or several treatment steps: a STAR*D report. *Am J Psychiatry* 2006; 163:1905–1917
- Fava M, Davidson KG: Definition and epidemiology of treatment-resistant depression. *Psychiatr Clin North Am* 1996; 19:179–200
- Slatkin NE, Rhiner M: Ketamine in the treatment of refractory cancer pain: case report, rationale, and methodology. *J Support Oncol* 2003; 1:287–293
- Berman RM, Cappiello A, Anand A, et al: Antidepressant effects of ketamine in depressed patients. *Biol Psychiatry* 2000; 47:351–354
- Mathew SJ, Shah A, Lapidus K, et al: Ketamine for treatment-resistant unipolar depression: current evidence. *CNS Drugs* 2012; 26:189–204
- Murrrough JW, Perez AM, Pillemer S, et al: Rapid and longer-term antidepressant effects of repeated ketamine infusions in treatment-resistant major depression. *Biol Psychiatry* 2013; 74:250–256
- Zarate CA Jr, Singh JB, Carlson PJ, et al: A randomized trial of an N-methyl-D-aspartate antagonist in treatment-resistant major depression. *Arch Gen Psychiatry* 2006; 63:856–864
- Murrrough JW, Iosifescu DV, Chang LC, et al: Antidepressant efficacy of ketamine in treatment-resistant major depression: a two-site randomized controlled trial. *Am J Psychiatry* 2013; 170: 1134–1142
- Shiroma PR, Johns B, Kuskowski M, et al: Augmentation of response and remission to serial intravenous subanesthetic ketamine in treatment resistant depression. *J Affect Disord* 2014; 155:123–129
- Sheehan DV, Lecrubier Y, Sheehan KH, et al: The Mini-International Neuropsychiatric Interview (MINI): the development and validation of a structured diagnostic psychiatric interview for DSM-IV and ICD-10. *J Clin Psychiatry* 1998; 59(suppl 20):22–33
- Targum SD, Pollack MH, Fava M: Redefining affective disorders: relevance for drug development. *CNS Neurosci Ther* 2008; 14:2–9
- Chandler GM, Iosifescu DV, Pollack MH, et al: Validation of the Massachusetts General Hospital Antidepressant Treatment History Questionnaire (ATRQ). *CNS Neurosci Ther* 2010; 16:322–325
- Rush AJ, Gullion CM, Basco MR, et al: The Inventory of Depressive Symptomatology (IDS): psychometric properties. *Psychol Med* 1996; 26:477–486
- Trivedi MH, Rush AJ, Ibrahim HM, et al: The Inventory of Depressive Symptomatology, Clinician Rating (IDS-C) and Self-Report (IDS-SR), and the Quick Inventory of Depressive Symptomatology, Clinician Rating (QIDS-C) and Self-Report (QIDS-SR) in public sector patients with mood disorders: a psychometric evaluation. *Psychol Med* 2004; 34:73–82

16. Montgomery SA, Åsberg M: A new depression scale designed to be sensitive to change. *Br J Psychiatry* 1979; 134:382–389
17. Busner J, Targum SD: The Clinical Global Impressions scale: applying a research tool in clinical practice. *Psychiatry (Edgmont)* 2007; 4:28–37
18. Guy W (ed): ECDEU Assessment Manual for Psychopharmacology: Publication ADM 76-338. Washington, DC, US Department of Health, Education, and Welfare, 1976, pp 218–222
19. Yalcin I, Bump RC: Validation of two global impression questionnaires for incontinence. *Am J Obstet Gynecol* 2003; 189:98–101
20. Overall JE, Gorham DR, Shawver JR: Basic dimensions of change in the symptomatology of chronic schizophrenics. *J Abnorm Soc Psychol* 1961; 63:597–602
21. Bremner JD, Krystal JH, Putnam FW, et al: Measurement of dissociative states with the Clinician-Administered Dissociative States Scale (CADSS). *J Trauma Stress* 1998; 11:125–136